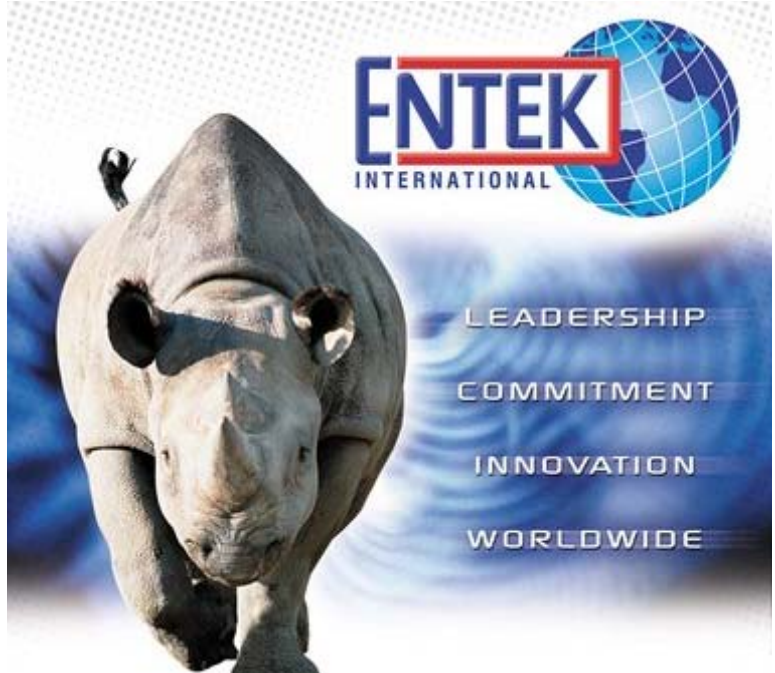


Duraloc™

Polyethylene Separator with Laminated Glass Mat for Heavy Duty & Start-Stop Applications



The Duraloc™ separator consists of a 100% glass fibre retainer mat laminated to the polyethylene separator. This is achieved by using a purpose built laminating machine to apply a special adhesive to the ribs of the separator, and laminating the glass mat to the separator ribs. The resultant laminated separator material is supplied to the customer in roll form. It can therefore be used on enveloping machines in the same way as the standard polyethylene separator material.

Duraloc™ should be specified in battery applications where an exceptionally heavy duty cycle is anticipated e.g. regular deep discharges. Examples include buses, taxis, commercial vehicles etc. The glass retainer mat in contact with the positive plate helps to protect the active material against shedding in deep discharge and high vibration conditions.

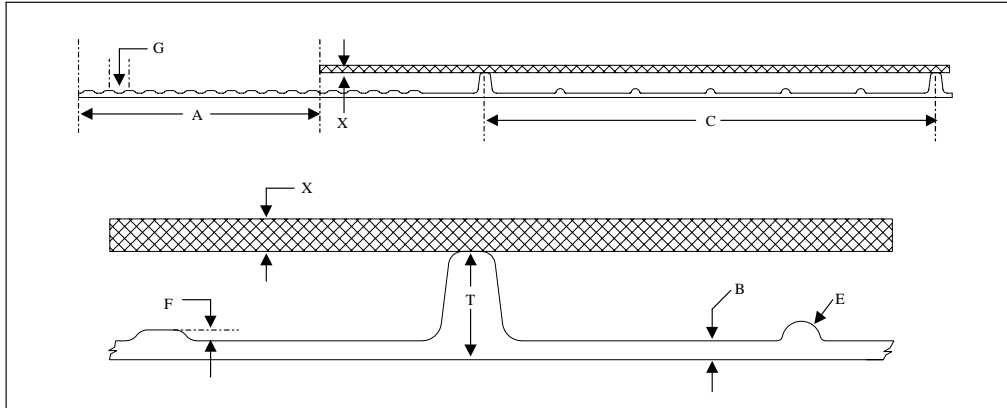


Duraloc™ helps to extend battery life under arduous operating conditions e.g. high ambient temperatures and severe vibration.

Smart Separator Solutions®

Duraloc™

Duraloc™ typical profile drawing and dimensions



		<i>Dimensions - mm</i>	<i>Tolerance</i>
W	Separator width	Any	± 0.8
T	Thickness	0.6 - 1.4	± 0.08
B	Backweb	0.15 - 0.25	± 0.03
S	Shoulder	16.5	± 4.5
C	Major rib spacing	18.14	(@ 160mm)
D	Mini-rib spacing	3.02	(@ 160mm)
E	Mini-rib radius	0.18	
F	Shoulder rib height	0.10	
G	Shoulder rib spacing	0.825	
A	Land Area	5.0	

(Typical dimensions as shown: other profiles may be available)

Duraloc™ XS™ - Key technical data @ 0.15mm backweb (Base material only)			
		<i>Nominal Value</i>	<i>Tolerance</i>
Moisture	%	4	5 max
Oil content	%	-	22 max
Electrical resistance	Ω.cm ²	0.065	0.08 max
Elongation XMD	%	400	200 min
Puncture	N	6.5	5 min
Porosity	%	55	± 6

(* Maximum ER dependent on profile)

ENTEK International Llc
 P.O.Box 127
 250 North Hansard Avenue
 Lebanon, Oregon 97355, USA
 Tel: +1 541 259 3901
 Fax: +1 541 259 3932
 Web: www.entek-international.com

ENTEK International Limited
 Mylord Crescent
 Camperdown Industrial Estate
 Killingworth, Newcastle upon Tyne
 NE12 5XG, UK
 Tel: +44 (0)191 268 5054
 Fax: +44 (0)191 268 8917

ENTEK International Enveloping Pte., Ltd
 76 Playfair Road #02-05
 LHK 2 Building
 Singapore 367996
 Tel: +65 6284 1474
 Fax: +65 6284 0349

Smart Separator Solutions®